



“Sow Quality”

Gold Star QS7608

A very stable yellow hybrid with good dry down, suitable for dry land and irrigated areas. It has performed well throughout West, East and Southern Africa. It is widely adapted to medium and high rainfall areas throughout the continent and has sound attributes for both small scale and commercial farmers alike.



Advantages

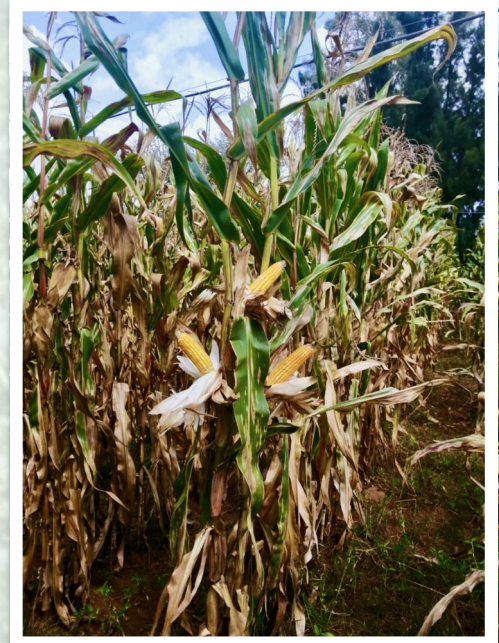
- High vigour and fast growth of plant.
- Good tolerance to high temperatures.
- Tall plant with strong stem and deep root system.
- Days to physiological maturity 125-130.
- Adaptable to all soil types.
- Ears full to the top.
- Fast dry down.
- High and stable yield.





“Sow Quality”

Technical Data	QS 7608
Flowering Time	FAO600
Silage Harvesting	110 - 130 days
Physiological Maturity	125 - 130 days
Plant Height	2.5 - 3.0 meters
Prolificacy	1.5 - 2 cobs
Tillering	Low
Standability	Good
<u>Disease Tolerance</u>	(Good = 0; Susceptible = 5)
Streak Virus	2.0
Northern Leaf Blight	2.0
Grey Leaf Spot	2.0
Drought Tolerance	Very Good
Heat Tolerance	Very Good
Dry Down	Medium
Kernel Type	Semi - dent
<u>Plant Stand</u>	<u>Target population</u>
(450 -750 mm)	30000-35000
(750 -1200 mm)	40000-50000



Packaging

Available in 60 MK (60 000 Maize Kernel) packaging. Other packaging is available upon request.