



*“Sow Quality”*

## Heron Soya



Heron is in a 7 maturity group, with a determinate growth habit with excellent standability and very good seed-shattering resistance. It canopies quickly because it is a bushy type variety. The hilum is light brown with a purple flower colour and a slower dry down characteristic. Plant population varies between 220 000 on dryland and up to 400 000 per hectare under irrigation. The pubescence is grey. Healthy plants and average disease tolerance to rust and do have tolerance to nematodes.

### **Soil Fertility**

Ineffective crop management, poor or no nodulating, acidic soil and low soil fertility also play a role in soya bean quality.

### **Herbicide sensitivity**

No soya bean cultivars are resistant to atrazine type herbicides and the full waiting period has to be enforced before planting.



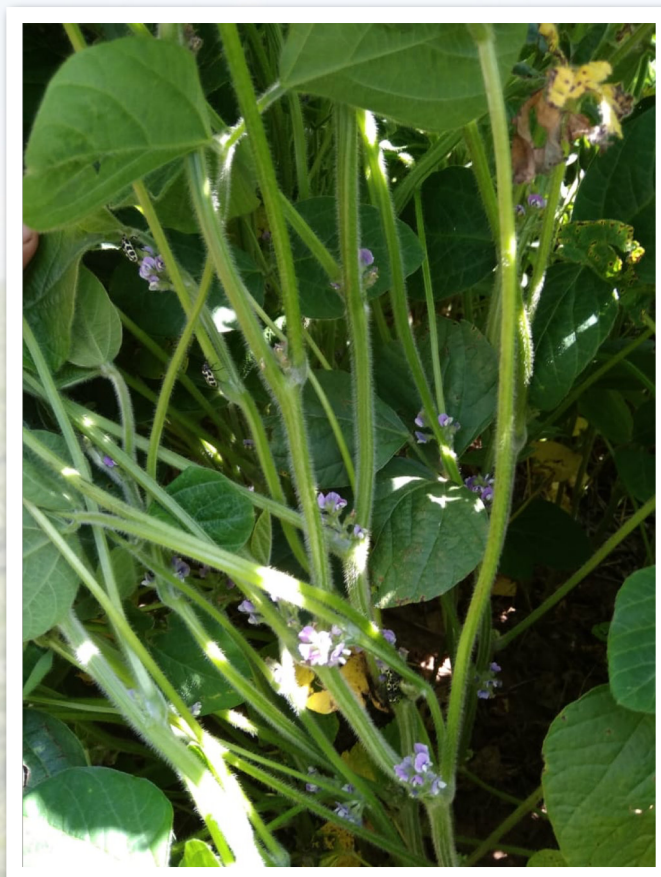
**QUALITY SEED (PTY) LTD**

[qualityseed.co.za](http://qualityseed.co.za)

[office@qualityseed.co.za](mailto:office@qualityseed.co.za)

Company Reg: 2015/071423/07

PO Box 8, Dalton, 3236, South Africa



Characteristics	Cool	Moderate	Warm
Days to maturity	175	159	136
Pod height (cm)	11	10	4
Plant height (cm)	79	78	69
Yield mean tons/ha	2.94	3.19	2.32
Oil % on moisture free basis	17.14	18.70	19.65
Mass 100 seeds (g)	17.23	19.20	21.72
% crude protein	38.14	39.83	38.90